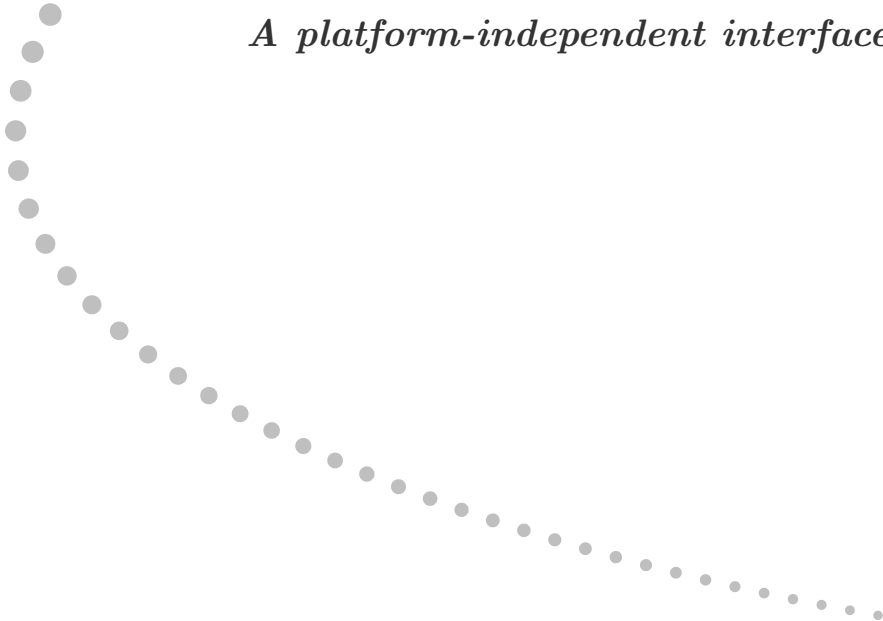




XLConnect

A platform-independent interface to Excel



The XLConnect Package

<http://mirai-solutions.com>

<http://cran.r-project.org/web/packages/XLConnect/index.html>

Author of this Vignette:

Anna Maria Ksiezopolska,

Mirai Solutions GmbH

XLConnect Version 0.1-9 March, 2012

Contents

1	Introduction	1
1.1	Scope and purpose of this document	1
1.2	Introduction to XLConnect	1
2	Installation	1
2.1	Software Requirements	1
2.2	Package Installation	2
3	Basic Usage and Examples	2
3.1	Getting Started	2
3.2	loadWorkbook() - loading/creating an Excel workbook	2
3.3	Writing Excel files: basic functions	3
3.3.1	createSheet() - creating sheets within an Excel workbook	3
3.3.2	writeWorksheet() - writing into sheets within an Excel workbook	3
3.3.3	createName() - creating names within an Excel workbook	3
3.3.4	writeNamedRegion() - writing named regions into an Excel workbook	3
3.3.5	saveWorkbook() - saving a workbook to an Excel file	3
3.3.6	writeWorksheetToFile() - writing into sheets of an Excel file	4
3.3.7	writeNamedRegionToFile() - writing named regions into an Excel file	4
3.4	Example: writing a sheet	4
3.5	Example: writing a sheet with one call	5
3.6	Example: writing a named region	5
3.7	Example: writing a named region with one call	7
3.8	Reading Excel files: basic functions	7
3.8.1	readWorksheet() - reading worksheets of an Excel workbook	7
3.8.2	readWorksheetFromFile() - reading worksheets of an Excel file	7
3.8.3	readNamedRegion() - reading named regions of an Excel workbook	7
3.8.4	readNamedRegionFromFile() - reading named regions of an Excel file	8
3.9	Example: reading from an Excel sheet	8
3.10	Example: reading from an Excel sheet with one call	8
3.11	Example: reading from an Excel named region	9
3.12	Example: reading from an Excel named region with one call	9
4	Advanced Usage and Examples	9
4.1	Generating an Excel report of currency exchange rates development	9

5	What's new in XLConnect version 0.1-9	15
6	Frequently Asked Questions	16
6.1	Running out of memory when processing large data sets	16
6.2	How can I style my output - set fonts, colors etc?	17
6.3	I'm getting errors trying to import Excel data	18
7	Contact and Support	19
8	Further Resources and References	19

1 Introduction

1.1 Scope and purpose of this document

This document is a user manual for the **XLConnect** R package. It is meant to be a top-level introduction and some of the more advanced features of **XLConnect** are not presented here. For such details, please refer to the [Reference Manual](#).

1.2 Introduction to XLConnect

XLConnect is a package that allows for reading, writing and manipulating Microsoft Excel files from within R. It uses the Apache POI API¹ as the underlying interface.

XLConnect allows you to produce formatted Excel reports, including graphics, straight from within R. This enables automation of manual formatting and reporting processes. Reading and writing named ranges enables you to process complex inputs and outputs in an efficient way.

XLConnect's Main Features

- Reading & writing of **Excel worksheets** (via `data.frames`)
- Reading & writing of **named ranges** (via `data.frames`)
- Creating, removing, renaming and cloning worksheets
- Adding **graphics**
- Specifying **cellstyles**: data formats, borders, back- and foreground fill color, fill pattern, text wrapping
- Controlling **sheet visibility**
- Defining **column width** and **row height**
- **Merging/unmerging** cells
- Setting/getting **cell formulas**
- Defining **formula recalculation** behavior (when workbooks are opened)
- Setting **auto-filters**
- **Style actions**: controlling application of cell styles when writing (e.g. when using templates)
- Defining behavior when **error cells** are encountered

2 Installation

2.1 Software Requirements

XLConnect is completely cross-platform and as such runs under Windows, Unix/Linux and Mac (32- and 64-bit). It does **not** require an installation of Microsoft Excel, or any special drivers.

All you need to use **XLConnect** are the following:

- R, version 2.10.0 or higher
- Java Runtime Environment (JRE), version 6.0 or higher

¹ For more information on the Apache POI API, see the <http://poi.apache.org/> webpage.

2.2 Package Installation

The **XLConnect** package is part of the Comprehensive R Archive Network (CRAN). It can be easily installed by using the `install.packages()` command in your R session:

```
install.packages("XLConnect")
```

3 Basic Usage and Examples

3.1 Getting Started

To load the package, use the `library()` or `require()` command in your R session:

```
library(XLConnect)
```

Now, you are ready to use **XLConnect**!

The User Manual (this document) can be opened by entering the following command:

```
vignette("XLConnect")
```

The Reference Manual, containing help pages for each function within the package, can be opened by using the `help()` command.

```
help(XLConnect)
```

3.2 loadWorkbook() - loading/creating an Excel workbook

The `loadWorkbook()` function loads a Microsoft Excel workbook, so that it can then be further manipulated. Setting the `create` argument to `TRUE` will ensure the file will be created, if it does not exist yet.

Both `.xls` and `.xlsx` file formats can be used.

Load an Excel workbook (create if not existing)

```
loadWorkbook(filename, create = TRUE)
```

3.3 Writing Excel files: basic functions

3.3.1 `createSheet()` - creating sheets within an Excel workbook

`createSheet()` creates a sheet of a chosen **name** in the workbook specified as the **object** argument.

Create a worksheet of a chosen name within a workbook

```
createSheet(object, name)
```

3.3.2 `writeWorksheet()` - writing into sheets within an Excel workbook

`writeWorksheet()` writes **data** into a worksheet (name or index specified as the **sheet** argument) of an Excel workbook (**object**). The **startRow** and **startCol** are both 1 by default, meaning that if they are not explicitly specified, the data will start being filled into the A1 cell of the worksheet.

Write into a worksheet

```
writeWorksheet(object, data, sheet, startRow = 1, startCol = 1,  
header = TRUE)
```

3.3.3 `createName()` - creating names within an Excel workbook

`createName()` creates a **name** for a specified **formula** in a workbook. The **overwrite** argument lets you define behaviour if the name already exists. If set to **TRUE**, the existing name will be removed before creating a new one. If set to **FALSE** (default setting), an exception will be thrown.

Create a name for a specified formula within a workbook

```
createName(object, name, formula, overwrite)
```

3.3.4 `writeNamedRegion()` - writing named regions into an Excel workbook

`writeNamedRegion()` writes a named range into a workbook. The **data** is assumed to be a **data.frame** (or list of **data.frames**, if multiple named regions are written with one call). The **header** argument allows you to specify whether column names should be written.

Write a named range into a workbook

```
writeNamedRegion(object, data, name, header)
```

3.3.5 `saveWorkbook()` - saving a workbook to an Excel file

`saveWorkbook()` saves a workbook to the corresponding Excel file and writes the file to disk.

Save a workbook to a chosen Excel file

```
saveWorkbook(object)
```

3.3.6 writeWorksheetToFile() - writing into sheets of an Excel file

`writeWorksheetToFile()` is a wrapper function, calling `loadWorkbook()`, `createSheet()` and `saveWorkbook()` functions subsequently. It therefore allows for writing data into worksheets of an Excel file in one call.

The `file` is the path name of the file to write to. The `styleAction` argument controls the application of cell styles when writing to Excel (type `?setStyleAction` into the console to see the supported styles). Within the `'...'` argument, arguments for the `writeWorksheet` function can be passed.

Write data to an Excel worksheet

```
writeWorksheetToFile(file, styleAction = XLC$STYLE_ACTION.XLCONNECT, ...)
```

3.3.7 writeNamedRegionToFile() - writing named regions into an Excel file

`writeNamedRegionToFile()` is a convenient wrapper function, calling `loadWorkbook()`, `createSheet()`, `createName()`, `writeNamedRegion()` and `saveWorkbook()` functions subsequently, therefore allowing for writing named regions to an Excel file in one call.

The `file` is the path name of the file to write to. The name of the named region is passed as the `name` argument and the data to write, as `data`. The `header` argument specifies if column names should be written. If you are writing data to a template in which the named region already exists, you don't need to specify the `formula`. Otherwise, if you are creating the file from scratch, supply the named region location as `formula`. The `styleAction` argument controls the application of cell styles when writing to Excel (type `?setStyleAction` into the console to see the supported styles).

Write data into an Excel named region

```
writeNamedRegionToFile(file, data, name, formula = NA, header = TRUE,  
styleAction = XLC$STYLE_ACTION.XLCONNECT)
```

3.4 Example: writing a sheet

Let's see how the basic functions introduced in this section can be used to create and save an Excel file. We will use the **ChickWeight** dataset (built-in R dataset) for this simple example.

The code below first loads the "XLConnectExample1.xlsx" workbook, using `loadWorkbook()`. If the workbook does not exist yet, the function creates it (since the `create` argument is set to `TRUE`).

Then, via `createSheet()`, a sheet named "chickSheet" is created within the workbook. We then use `writeWorksheet()` to write the **ChickWeight** data frame into `chickSheet`.

At the end, we use `saveWorkbook()` to save the `XLConnectExample1.xlsx` file.

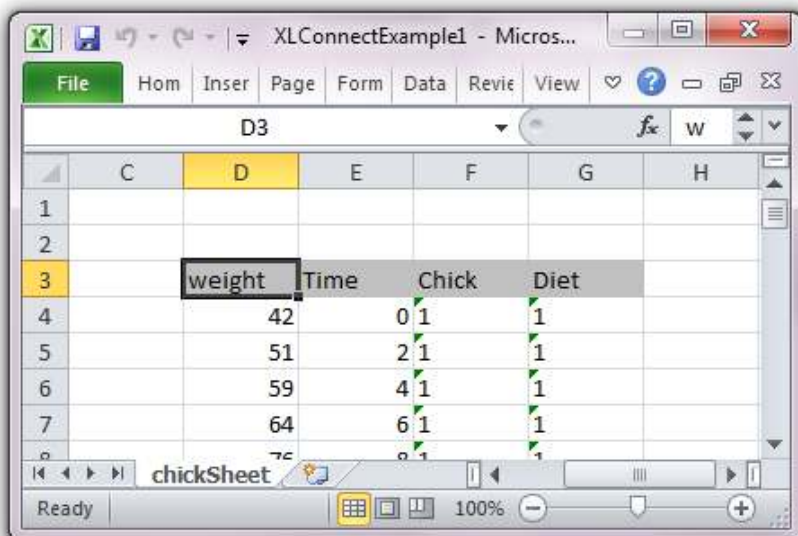
```

> require(XLConnect)
> wb <- loadWorkbook("XLConnectExample1.xlsx", create = TRUE)
> createSheet(wb, name = "chickSheet")
> writeWorksheet(wb, ChickWeight, sheet = "chickSheet", startRow = 3, startCol = 4)
> saveWorkbook(wb)

```

Please note that only at the point when we call `saveWorkbook()`, the Excel file is written to disk. All the previous operations are performed in-memory, which has great performance advantages.

Figure 1: ChickWeight data frame written into the XLConnectExample1.xlsx file



	C	D	E	F	G	H
1						
2						
3		weight	Time	Chick	Diet	
4		42	0	1	1	
5		51	2	1	1	
6		59	4	1	1	
7		64	6	1	1	

3.5 Example: writing a sheet with one call

The four lines of code presented in the previous example can be replaced with a single call of the `writeWorksheetToFile()` function:

```

> require(XLConnect)
> writeWorksheetToFile("XLConnectExample2.xlsx", data = ChickWeight, sheet = "chickSheet", startRow = 3,

```

`writeWorksheetToFile()` loads the workbook, creates the sheet and finally saves the workbook. When you only need to write one sheet into an Excel file, this is probably the better choice. If you need to write more sheets, however, using the functions presented in the previous example will be more efficient. This is because calling `writeWorksheetToFile()` multiple times will open, write and close the Excel file with each call. Using the functions in the first example will, in contrast, allow you to open the workbook, do multiple operations on it and only then close it.

3.6 Example: writing a named region

In this example we will show how to write data into a named region. We will use the **women** dataset.

Similarly as in the example of writing an Excel sheet, we first load the workbook, using `loadWorkbook()`, and then create a sheet named "womenData", using `createSheet()`.

We then use `createName()` to produce a named region "womenName", starting in the C5 cell of the "womenData" sheet. Calling `writeNamedRegion()` writes the name into the workbook. At the end, we use `saveWorkbook()` to write the Excel file to disk.


```

> require(XLConnect)
> wb = loadWorkbook("XLConnectExample3.xlsx", create = TRUE)
> createSheet(wb, name = "womenData")
> createName(wb, name = "womenName", formula = "womenData!$C$5", overwrite = TRUE)
> writeNamedRegion(wb, women, name = "womenName")
> saveWorkbook(wb)

```

Figure 2: women dataset written into womenName named region in the XLConnectExample3.xlsx file

XLConnectExample3						
File		Home	Insert	Page Layout	Formulas	Review
womenName						
	B	C	D	E	F	
4						
5		height	weight			
6		58	115			
7		59	117			
8		60	120			
9		61	123			
10		62	126			
11		63	129			
12		64	132			
13		65	135			
14		66	139			
15		67	142			
16		68	146			
17		69	150			
18		70	154			
19		71	159			
20		72	164			
21						
womenData						
Average: 100.8666667		Count: 32		Sum: 3026		

3.7 Example: writing a named region with one call

The `writeNamedRegionToFile()` function can be used to produce the same result as in the previous example, with only one function call:

```
> require(XLConnect)
> writeNamedRegionToFile("XLConnectExample4.xlsx", women,
+                         name = "womenName", formula = "womenData!$C$5")
```

3.8 Reading Excel files: basic functions

3.8.1 readWorksheet() - reading worksheets of an Excel workbook

`readWorksheet()` allows for reading data from a workbook that has been previously loaded and is passed as the `object` argument. The name or index of the worksheet to read from should be passed as the `sheet` argument. The `startRow` and `startCol` arguments specify the location of the top left corner of data to be read, while `endRow` and `endCol` specify the bottom right corner. If `header = TRUE`, the first row is interpreted as column names of the `data.frame` object read in.

If the `startRow`, `startCol`, `endRow` and `endCol` arguments are not specified, or are passed as `<= 0`, the "bounding box" of the data is treated as the corresponding boundaries.

All arguments (except `object`) are vectorized, which allows for reading of multiple worksheets with one call.

Read data from a worksheet of an Excel workbook

```
readWorksheet(object, sheet, startRow, startCol, endRow, endCol,
header = TRUE)
```

3.8.2 readWorksheetFromFile() - reading worksheets of an Excel file

`readWorksheetFromFile()` allows for reading data from a workbook with one call, without loading the workbook first. The `file` argument is the path of the file to read from. All arguments of the `readWorksheet()` function can be passed within the `'...'` argument.

Read data from a worksheet of an Excel workbook with one call

```
readWorksheetFromFile(file, ...)
```

3.8.3 readNamedRegion() - reading named regions of an Excel workbook

`readNamedRegion()` can be used for reading data from named region in an Excel workbook. The workbook must first be loaded and passed as the `object` argument. Remaining arguments are the `name` of the named region and `header`, specifying whether the first row of data should be interpreted as column names.

Read data from a named region of an Excel workbook

```
readNamedRegion(object, name, header = TRUE)
```

3.8.4 readNamedRegionFromFile() - reading named regions of an Excel file

`readNamedRegionFromFile()` is a convenience wrapper function which allows for reading named regions from an Excel file with one call. The function subsequently calls `loadWorkbook()` and `readNamedRegion()`.

The `file` argument specifies the path to the Excel file to be read and `name` - the named region to be read. The `header` argument specifies whether the first row of data should be interpreted as column names.

Read data from a named region of an Excel file

```
readNamedRegionFromFile(file, name, header = TRUE)
```

3.9 Example: reading from an Excel sheet

In this example, we will show how you can use **XLConnect** to read from an Excel sheet. For this purpose, we will use the file created in the example in section 3.4. We set the `endRow` argument to 10, to limit the result. We set the rest of arguments specifying boundaries as 0, so that they are automatically determined.

Please note, that alternatively to setting the `sheet` argument to the name of the sheet we want to read from, "chickSheet", we could also specify it with the sheet index, as `sheet = 1`.

```
> require(XLConnect)
> wb = loadWorkbook("XLConnectExample1.xlsx", create = TRUE)
> data = readWorksheet(wb, sheet = "chickSheet", startRow = 0, endRow = 10,
+                       startCol = 0, endCol = 0)
> data
```

	weight	Time	Chick	Diet
1	42	0	1	1
2	51	2	1	1
3	59	4	1	1
4	64	6	1	1
5	76	8	1	1
6	93	10	1	1
7	106	12	1	1

3.10 Example: reading from an Excel sheet with one call

The `readWorksheetFromFile()` function can be used to, with only one call, obtain the same result as was shown in the previous example:

```
> require(XLConnect)
> data = readWorksheetFromFile("XLConnectExample1.xlsx",
+                               sheet = "chickSheet", startRow = 0, endRow = 10,
+                               startCol = 0, endCol = 0)
```

3.11 Example: reading from an Excel named region

In this example, we will show how to use **XLConnect**'s functions to read from a named region in an Excel file. We will use the file created in the example in section 3.6.

```
> require(XLConnect)
> wb = loadWorkbook("XLConnectExample3.xlsx", create = TRUE)
> data = readNamedRegion(wb, name = "womenName")
> data
```

	height	weight
1	58	115
2	59	117
3	60	120
4	61	123
5	62	126
6	63	129
7	64	132
8	65	135
9	66	139
10	67	142
11	68	146
12	69	150
13	70	154
14	71	159
15	72	164

3.12 Example: reading from an Excel named region with one call

The result obtained in the previous example can be reproduced by calling the wrapper function: `readNamedRegionFromFile()`, without the necessity of loading the workbook first:

```
> require(XLConnect)
> data = readNamedRegionFromFile("XLConnectExample3.xlsx", "womenName")
```

4 Advanced Usage and Examples

4.1 Generating an Excel report of currency exchange rates development

In this example, we will show an example use case of **XLConnect**: generation of a simple Excel report, showing the recent development of currency exchange rates (EUR, USD, GBP, JPY vs Swiss Franc (CHF)).

For this example we are going to also use some other packages:

- **fImport**: Rmetrics - Economical and Financial Data Import
- **forecast**: Forecasting functions for time series
- **zoo**: S3 Infrastructure for Regular and Irregular Time Series
- **ggplot2**: An implementation of the Grammar of Graphics
- **scales**: Provides methods for automatically determining breaks and labels for axes and legends

```
install.packages(c("XLConnect", "fImport", "forecast", "zoo", "ggplot2",
  "scales"))
```

Loading the required packages:

```
> require(XLConnect)
> require(fImport)
> require(forecast)
> require(zoo)
> require(ggplot2) # >= 0.9.0
> require(scales)
```

Preparing the data to be reported:

```
> # Currencies we're interested in compared to CHF
> currencies = c("EUR", "USD", "GBP", "JPY")
> # Fetch currency exchange rates (currency to CHF)
> # from OANDA (last 366 days)
> curr = do.call("cbind", args = lapply(currencies,
+   function(cur) oandaSeries(paste(cur, "CHF", sep = "/"))))
> # Make a copy for later use
> curr.orig = curr
> # Scale currencies to exchange rate on first day in the series (baseline)
> curr = curr * matrix(1/curr[1,], nrow = nrow(curr),
+   ncol = ncol(curr), byrow = TRUE) - 1
> # Some data transformations to bring the data into a simple data.frame
> curr = transform(curr, Time = time(curr)@Data)
> names(curr) = c(currencies, "Time")
> # Cyclic shift to bring the Time column to the front
> curr = curr[(seq(along = curr) - 2) %% ncol(curr) + 1]
> # Number of days to predict
> predictDays = 20
> # For each currency ...
> currFit = sapply(curr[, -1], function(cur) {
+   as.numeric(forecast(cur, h = predictDays)$mean)
+ })
> # Add Time column to predictions
> currFit = cbind(
+   Time = seq(from = curr[nrow(curr), "Time"],
+   length.out = predictDays + 1, by = "days")[-1],
+   as.data.frame(currFit))
> # Bind actual data with predictions
> curr = rbind(curr, currFit)
```

Now, let's write the data to Excel:

```
> # Workbook filename
> wbFilename = "swiss_franc.xlsx"
> # Create a new workbook
> wb = loadWorkbook(wbFilename, create = TRUE)
> # Create a new sheet named 'Swiss_Franc'
> sheet = "Swiss_Franc"
> createSheet(wb, name = sheet)
```

```

> # Create a new Excel name referring to the top left corner
> # of the sheet 'Swiss_Franc' - this name is going to hold
> # our currency data
> dataName = "currency"
> nameLocation = paste(sheet, "$A$1", sep = "!")
> createName(wb, name = dataName, formula = nameLocation)
> # Write the currency data to the named region created above
> # Note: the named region will be automatically redefined to encompass all
> # written data
> writeNamedRegion(wb, data = curr, name = dataName, header = TRUE)
> # Save the workbook (this actually writes the file to disk)
> saveWorkbook(wb)
>

```

The figure below illustrates the first few rows of the named region we have written to the Excel file. Please note, the data in your file will look different, since you will be running the example at a different time.

Figure 3: currency named region we have written

	A	B	C	D	E
1	Time	EUR	USD	GBP	JPY
2	02.07.2011 00:00:00	0	-1.1E-16	0	-1.1E-16
3	02.08.2011 00:00:00	0.000385	0.000209	0.000974	-0.0012
4	02.09.2011 00:00:00	0.003853	0.000209	0.000195	-1.1E-16
5	02.10.2011 00:00:00	0.013176	0.006904	0.004805	0.003868
6	02.11.2011 00:00:00	0.013407	0.007008	0.005519	-8.6E-05
7	02.12.2011 00:00:00	0.01464	0.016004	0.011558	0.000602
8	02.13.2011 00:00:00	0.016566	0.018515	0.012077	0.003438
9	02.14.2011 00:00:00	0.016412	0.018619	0.012207	0.00361
10	02.15.2011 00:00:00	0.011327	0.01705	0.011882	0.00318
11	02.16.2011 00:00:00	0.008784	0.013912	0.012207	-0.00275
12	02.17.2011 00:00:00	0.005856	0.009519	0.00948	-0.00928
13	02.18.2011 00:00:00	0.000385	0.000105	0.001039	-0.01582
14	02.19.2011 00:00:00	-0.00316	-0.00617	-0.00058	-0.01968

Now, we are going to work on the report further, to make it **look** nicer. Let's say that for each currency, we want to highlight the points in time when there was a change of more than 2% compared to the previous day.

```
> # Load the workbook created above
> wb = loadWorkbook(wbFilename)
> # Create a date cell style with a custom format for the Time column
> # (only show year, month and day without any time fields)
> csDate = createCellStyle(wb, name = "date")
> setDataFormat(csDate, format = "yyyy-mm-dd")
> # Create a time/date cell style for the prediction records
> csPrediction = createCellStyle(wb, name = "prediction")
> setDataFormat(csPrediction, format = "yyyy-mm-dd")
> setFillPattern(csPrediction, fill = XLC$FILL.SOLID_FOREGROUND)
> setFillForegroundColor(csPrediction, color = XLC$COLOR.GREY_25_PERCENT)
> # Create a percentage cell style
> # Number format: 2 digits after decimal point
> csPercentage = createCellStyle(wb, name = "currency")
> setDataFormat(csPercentage, format = "0.00%")
> # Create a highlighting cell style
> csHlight = createCellStyle(wb, name = "highlight")
> setFillPattern(csHlight, fill = XLC$FILL.SOLID_FOREGROUND)
> setFillForegroundColor(csHlight, color = XLC$COLOR.CORNFLOWER_BLUE)
> setDataFormat(csHlight, format = "0.00%")
> # Index for all rows except header row
> allRows = seq(length = nrow(curr)) + 1
> # Apply date cell style to the Time column
> setCellStyle(wb, sheet = sheet, row = allRows, col = 1,
+             cellstyle = csDate)
> # Set column width such that the full date column is visible
> setColumnWidth(wb, sheet = sheet, column = 1, width = 2800)
> # Apply prediction cell style
> setCellStyle(wb, sheet = sheet, row = tail(allRows, n = predictDays),
+             col = 1, cellstyle = csPrediction)
> # Apply number format to the currency columns
> currencyColumns = seq(along = currencies) + 1
> for(col in currencyColumns) {
+     setCellStyle(wb, sheet = sheet, row = allRows, col = col,
+     cellstyle = csPercentage)
+ }
> # Check if there was a change of more than 2% compared
> # to the previous day (per currency)
> idx = rollapply(curr.orig, width = 2,
+             FUN = function(x) abs(x[2] / x[1] - 1),
+             by.column = TRUE) > 0.02
> idx = rbind(rep(FALSE, ncol(idx)), idx)
> widx = apply(idx, 2, which)
> # Apply highlighting cell style
> for(i in seq(along = currencies)) {
+     setCellStyle(wb, sheet = sheet, row = widx[[i]] + 1, col = i + 1,
+     cellstyle = csHlight)
+ }
> # Note:
> # +1 for row since there is a header row
> # +1 for column since the first column is the time column
```



```
+ }
> saveWorkbook(wb)
```

The illustration below shows the updated `swiss_franc.xlsx` file, with highlighted cells, where day-to-day change was bigger than 2%. Please note, the data in your file will look different, since you will be running the example at a different time.

Figure 4: Highlighted cells, where day-to-day change bigger than 2%

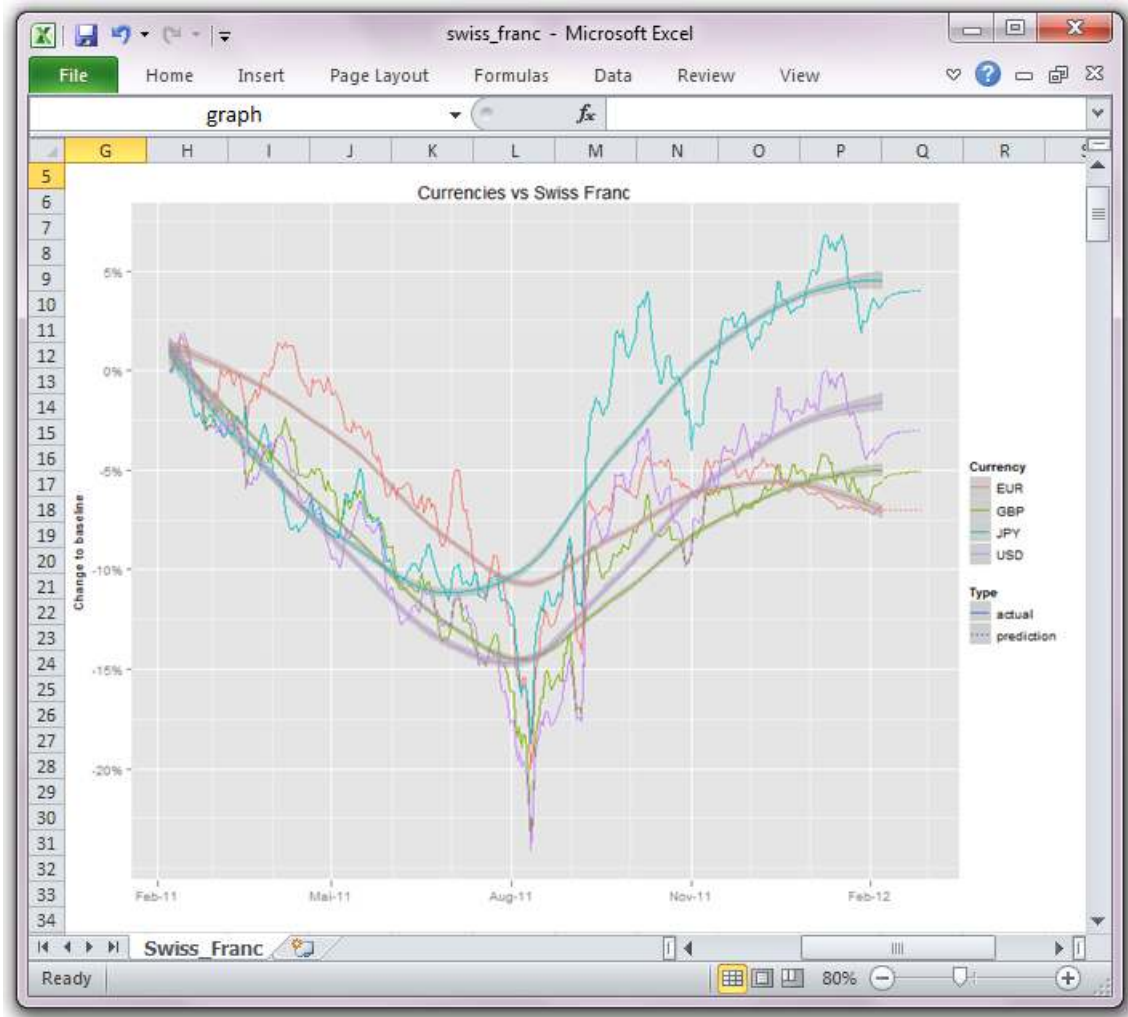
	A	B	C	D	E	F
1	Time	EUR	USD	GBP	JPY	
184	2011-08-08	-15.48%	-19.82%	-18.34%	-15.84%	
185	2011-08-09	-16.49%	-20.60%	-19.19%	-16.22%	
186	2011-08-10	-18.45%	-22.21%	-21.28%	-17.29%	
187	2011-08-11	-20.00%	-24.09%	-23.49%	-18.75%	
188	2011-08-12	-18.85%	-22.45%	-22.14%	-16.97%	
189	2011-08-13	-15.88%	-19.73%	-19.03%	-14.10%	
190	2011-08-14	-14.56%	-18.60%	-17.73%	-12.77%	
191	2011-08-15	-14.52%	-18.56%	-17.70%	-12.75%	
192	2011-08-16	-12.89%	-17.56%	-16.47%	-11.84%	
193	2011-08-17	-12.78%	-17.82%	-16.40%	-12.09%	
194	2011-08-18	-12.03%	-17.19%	-15.31%	-11.17%	
195	2011-08-19	-12.21%	-17.10%	-15.06%	-11.06%	
196	2011-08-20	-12.60%	-17.30%	-15.25%	-11.17%	

Further, we will add a graph to our report.

```
> wb = loadWorkbook(wbFilename)
> # Stack currencies into a currency variable (for use with ggplot2 below)
> gcurr = reshape(curr, varying = currencies, direction = "long",
+ v.names = "Value", times = currencies, timevar = "Currency")
> # Also add a discriminator column to differentiate between actual and
> # prediction values
> gcurr[["Type"]] = ifelse(gcurr$Time %in% currFit$Time,
+ "prediction", "actual")
> # Create a png graph showing the currencies in the context
> # of the Swiss Franc
> png(filename = "swiss_franc.png", width = 800, height = 600)
> ggplot(gcurr, aes(Time, Value, colour = Currency, linetype = Type)) +
+ geom_line() + stat_smooth(method = "loess") + xlab("") +
+ scale_y_continuous("Change to baseline", labels = percent) +
+ opts(title = "Currencies vs Swiss Franc",
+ axis.title.y = theme_text(size = 10, angle = 90, vjust = 0.3))
> dev.off()
> # Define where the image should be placed via a named region;
> # let's put the image two columns left to the data starting
> # in the 5th row
> createName(wb, name = "graph",
+ formula = paste(sheet, idx2cref(c(5, ncol(curr) + 2)), sep = "!"))
> # Note: idx2cref converts indices (row, col) to Excel cell references
>
> # Put the image created above at the corresponding location
> addImage(wb, filename = "swiss_franc.png", name = "graph",
+ originalSize = TRUE)
> saveWorkbook(wb)
```

As a result, we obtain the following graph, written into Excel file as "graph" named region. Please note, your graph will look different, since you will be running the code at a different time.

Figure 5: Graph showing the currency trends



5 What's new in XLConnect version 0.1-9

With version 0.1-9 of **XLConnect** we moved to Apache POI 3.8-beta5. The most prominent new features/extensions are an improved vignette (this document!) which provides more information and examples to get people started with the package. A new type conversion mechanism was introduced which allows users to pre-specify column types/classes and even force conversions between types (e.g. from **character** to **numeric**) when reading in data using `readNamedRegion` or `readWorksheet`. Instead of relying completely on cell types (which is the default mechanism), this allows to specify column classes of the data to be read in upfront. Possible type conversion issues will be reported back to the user/developer via warnings referring to the actual cell that is causing problems. Another new feature that was introduced is the function `xlcEdit`. It allows to edit plain `data.frames` in an Excel file editor (e.g. MS Excel). Changes will be applied to the underlying data object after closing the editor. Note that this functionality is only available under Windows and Mac OS X. For more information please see the [Reference Manual](#).

A summary of news in **XLConnect** 0.1-9 can be found in the [NEWS](#) file on CRAN.

6 Frequently Asked Questions

6.1 Running out of memory when processing large data sets

Question:

I'm running out of memory when processing large data sets:

```
writeNamedRegionToFile(file = "huge.xls", data = giant.data.frame,  
namedRegion = "LargeRegion", formula = "LotsOfData!A1")
```

```
Error: OutOfMemoryError (Java): Java heap space
```

Answer:

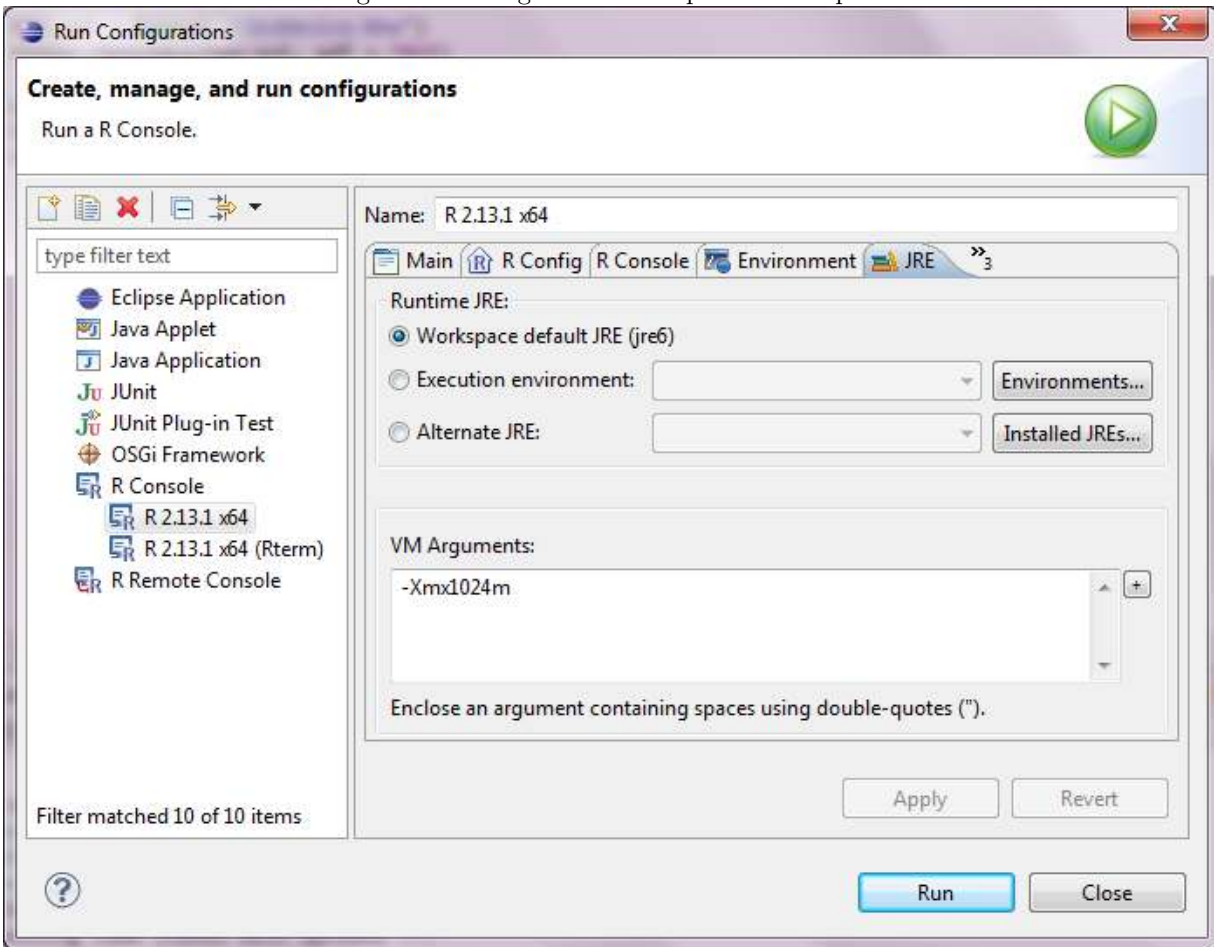
This is caused by the fact that **XLConnect** needs to copy your entire data object over to the JVM in order to write it to a file and the JVM has to be initialized with a fixed upper limit on its memory size. To change this amount, you can pass parameters to the R's JVM just like you can to a command line Java process via rJava's options support:

```
options(java.parameters = "-Xmx1024m")  
library(XLConnect)
```

Note, however, that these parameters are evaluated exactly once per R session when the JVM is initialized - this is usually once you load the first package that uses Java support, so you should do this as early as possible.

If you're using R from within Eclipse/StatET, the JVM is initialized as soon as the R process is started due to the required communication between Eclipse and R (the `rj/rj-server` components). Therefore, you need to set the Java heap size in Eclipse's "Run Configurations" (Run > Run Configurations on top menu) for the R engine:

Figure 6: Setting the Java heap size in Eclipse:



Some general Java advice: The upper limit of the Xmx parameter is system dependent - most prominently, 32bit Windows will fail to work with anything much larger than 1500m, and it is usually a bad idea to set Xmx larger than your physical memory size because garbage collection and virtual memory do not play well together.

6.2 How can I style my output - set fonts, colors etc?

Question:

How can I style my output - set fonts, colors etc?

Answer:

XLConnect does not currently allow direct access to low-level formatting options. However, it is possible to assign named cell styles to cells, so the preferred workflow would be to:

1. define some named cell styles in an Excel document ("Format" -> "Styles" in pre-2007 Excel, "Cell styles" on the default pane of Excel 2007 and on)
2. save the document to a file

3. then load this template in **XLConnect** and use the `setCellStyle` method to assign the predefined styles:

```
library(XLConnect)
w <- loadWorkbook("template.xls")
df <- data.frame("foo")
c <- getCellStyle(w, "FatFont")

writeWorksheet(w, data=df, sheet=1, startRow=1, startCol=1, header=TRUE)
setCellStyle(w, sheet=1, row=1, col=1, cellstyle=c)
saveWorkbook(w)
```

(Unfortunately, this does not work with the **XLConnect** 0.1-3 due to a bug (#50912) in the version of Apache POI that it uses. **XLConnect** 0.1-4 comes with a fixed POI and should no longer suffer from this issue.)

6.3 I'm getting errors trying to import Excel data

Question:

I'm getting errors trying to import Excel data like:

```
Unexpected eval type
(org.apache.poi.hssf.record.formula.eval.MissingArgEval)
```

or

```
Error: NotImplementedException (Java): Error evaluating cell Sheet1!A1
```

Answer:

This type of error is triggered when **XLConnect** can not determine the value of a cell in the region you're trying to import. Usually, this happens because Apache POI does not support all possible Excel formulae. A particular problem are array formulas and array functions such as **TRANSPOSE**.

There is no direct solution for accessing the values of fields that Apache POI doesn't know how to compute. However, if you can live without the cell values and just want to ignore uncomputable cells, have a look at the `onErrorCell` function (new in **XLConnect** 0.1-4) to tell **XLConnect** that you want to ignore errors.

If you have Excel and are willing to invest some manual effort, you can manually create a static copy, that can be imported as follows:

- Select the region containing your data
- **Edit -> Copy**
- Select an empty cell and **Edit -> Paste Special**
- In the Paste radio group, select **Values**

You should then be able to import the pasted region without problems.

7 Contact and Support

We are very glad that you are using **XLConnect** and we would be happy to hear from you!



Please mail any bug reports, feature requests or technical inquiries to:
xlconnect-bugs@mirai-solutions.com



For any other feedback you may have, please contact us at:
xlconnect@mirai-solutions.com



You can also follow and contact us on **LinkedIn**:
<http://www.linkedin.com/company/mirai-solutions-gmbh>



We encourage you to also follow us on **Twitter**:
[@miraisolutions](https://twitter.com/miraisolutions)

We will do our best to reply to your enquires as quickly as possible!

8 Further Resources and References

1. Mirai Solutions website:
<http://www.mirai-solutions.com>
2. Mirai Solutions blog on Wordpress:
<http://miraisolutions.wordpress.com/>
3. Mirai Solutions LinkedIn Page:
<http://www.linkedin.com/company/mirai-solutions-gmbh>
4. **XLConnect** on cran:
<http://cran.r-project.org/web/packages/XLConnect/index.html>
5. **XLConnect** on crantastic!:
<http://crantastic.org/packages/XLConnect>
6. **XLConnect** on inside-R!:
<http://www.inside-r.org/packages/xlconnect>
7. R Base course by Dr. Roberto Dantas de Pinho, referring to **XLConnect** (Portuguese):
<http://www.slideshare.net/RobertodePinho/curso-bsico-de-r>
8. YouTube tutorial by bebilda, on importing and exporting data using **XLConnect** (Spanish):
<http://www.youtube.com/watch?v=84ShWUiq5Mg>
9. YouTube tutorial by MrIanfellows, on importing data into R using JGR and **XLConnect**:
http://www.youtube.com/watch?v=1QA_7ks1pnc
10. **XLConnect** usage described in the R Programming/Data Management section in Wikibooks (Reading and saving data > Importing and exporting data > Excel (xls,xlsx)):
http://en.wikibooks.org/wiki/R_Programming/Data_Management

Thanks for giving XLConnect a try!

We hope that you enjoy using **XLConnect**. We would be very happy to hear your feedback about the package and about this Vignette.

Also, we would be very grateful if you were willing to spare a few minutes and rate the package, or write a review, on [crantastic!](#)

- *Mirai Solutions* -